

AMILO Notebook Xi 3650

Application buttons

Realtek Wireless USB™ technology (device dependent)

Issue 07/11/2008

Category Operating Manual

Language English

Pages 2

Application buttons

Your notebook is equipped with four application buttons. By pressing one of these buttons you can directly access a previously defined file on your computer, an Internet page or your email account.



The four application buttons are located on a separate keypad directly above the numeric keypad.

Allocating the application buttons

Each application button can have its own action allocated to it.

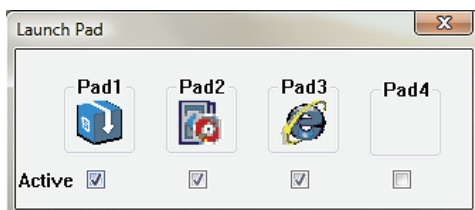


Depending on the computer configuration, one of the programmes *Launch Pad* or *Launch Manager* is installed on your notebook for allocation of the buttons

Allocation of the buttons using Launch Pad

- Start the program using *Startsymbol/Launch Pad*
 - Use drag and drop to pull any program or file symbol into one of the four squares (pad 1 to pad 4)
 - Set the checkmark in the field underneath to "Active"
 - Close *Launch Pad*
- or
- Drag another program symbol into a square.
 - Close *Launch Pad*
 - Press the application button that you have allocated.

The program which you have allocated is launched.



Realtek Certified Wireless USB™ technology (device dependent)



Depending on the model, your notebook is equipped with Certified Wireless USB technology.

Certified Wireless USB is a new technology based on a UWB (Ultra-Wide Band) radio platform.

It is the new wireless extension to USB technology, maintaining the high speed and security of cabled USB while removing the inconvenience of the cables.

Applications built to use a USB will work seamlessly with Certified Wireless USB.

Certified Wireless USB permits a mobile lifestyle and provides convenience for mobile computing users.